



# STRATASHIELD

LIQUID APPLIED  
ROOFING SYSTEMS



[stratawaterproofing.com](http://stratawaterproofing.com)



Strata Waterproofing is a specialist manufacturer and distributor of high-performance roofing and waterproofing solutions. Our ethos is built on delivering **quality products**, offering **friendly and flexible service**, and supporting our customers with **expert technical advice** and guidance.





# INTRODUCING STRATA

## ROOFING & WATERPROOFING SPECIALIST

At Strata Waterproofing we provide a complete roofing solution, from initial design concept through to completion. With a range of high quality, engineered roofing systems and a knowledgeable, friendly team, Strata are on hand to help specifiers, contractors and building owners find the right solution for their project.

Strata Waterproofing systems include:

- StrataBit Bituminous Membranes
- StrataPlan Polymeric Single Ply
- StrataShield Liquids
- CladFlex Pitched Roof Protection

# STRATASHIELD LIQUID ROOFING

## ADVANCED WATERPROOFING TECHNOLOGY

The StrataShield range of liquid waterproofing systems incorporates the latest polyurethane technology, and has been specially developed to meet the needs of modern construction. With traditional two-layer, wet-on-wet and spray-applied options, StrataShield can be tailored to the individual needs of your roof or balcony, providing outstanding waterproofing performance and long-term peace of mind.

- ✓ BBA Approved with Broof T4 fire rating
- ✓ Approved for use on zero falls roofs and blue roofs
- ✓ Flame-free, seamless waterproofing protection
- ✓ Quick and simple application
- ✓ Ideal for both new build and refurbishment projects
- ✓ Range of finishes for decorative balconies and walkways
- ✓ Long-lasting waterproofing performance



# STRATASHIELD - OVERLAY OPTIONS

## HIGH PERFORMANCE LIQUID WATERPROOFING SYSTEM

### System overview

The StrataShield range includes a variety of refurbishment options, ideal for use as an overlay on roofs, balconies and walkways. Where an economical, moisture-cured system is required, StrataShield Flex offers the perfect solution, and where speed of cure is a priority, StrataShield ProFlex offers wet-on-wet chemical cure technology.

### Features & benefits

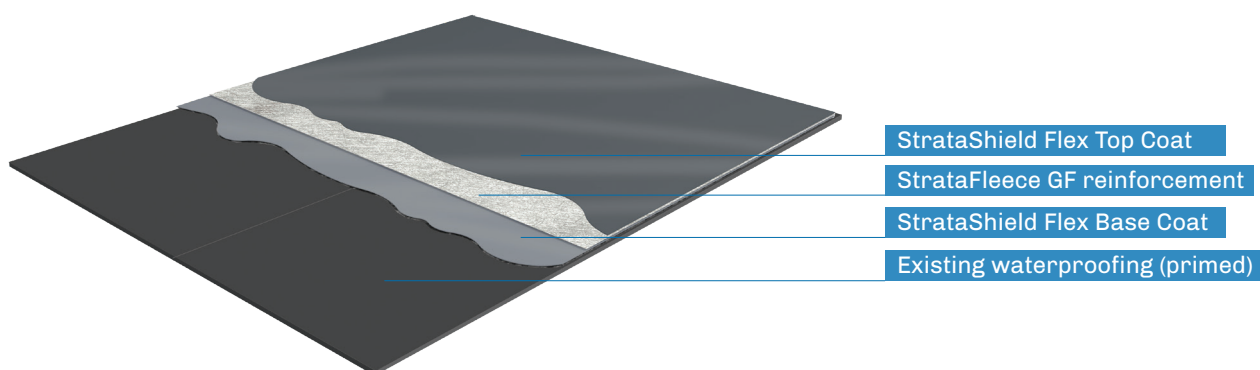
- Economical overlay solution
- Choice of moisture-cure or chemical-cure technology
- Rapid installation
- Suitable for blue roofs and zero falls roofs
- BBA Approved with Broof T4 fire performance
- Optional finishes for balconies and walkways

### Suitable substrates

- ✓ Felt & asphalt membranes
- ✓ Single ply (PVC, EPDM etc)
- ✓ Existing liquids
- ✓ Metals
- ✓ Concrete, brick & masonry
- ✓ Timber

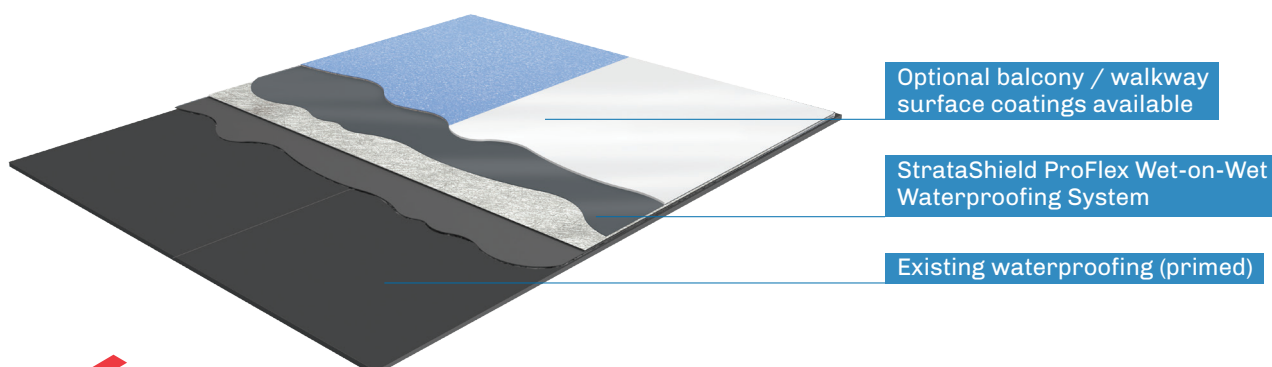
### Flat roof refurbishment - overlay example

The illustration below shows a typical StrataShield overlay system onto an existing bituminous waterproofing membrane:



### Balconies and walkways - overlay example

The illustration below shows a typical StrataShield overlay system for terraces, balconies and walkways:



# STRATASHIELD PROFLEX - WARM ROOF

## WET ON WET, FAST-CURE LIQUID WATERPROOFING SYSTEM

### System overview

StrataShield ProFlex is a next-generation waterproofing system that is ideally suited to a wide range of roofs, balconies, terraces and walkways areas. It is a chemically cured, 'wet-on-wet' system, incorporating a special super-accelerant catalyst which dramatically reduces installation times and enables rapid return to service.

The StrataShield ProFlex System provides class-leading performance and is only installed by Registered ProFlex Contractors who have received specialist system training and have proven expertise in liquid waterproofing. It also carries full BBA Accreditation and is supported by long-term, meaningful warranties for complete peace of mind.

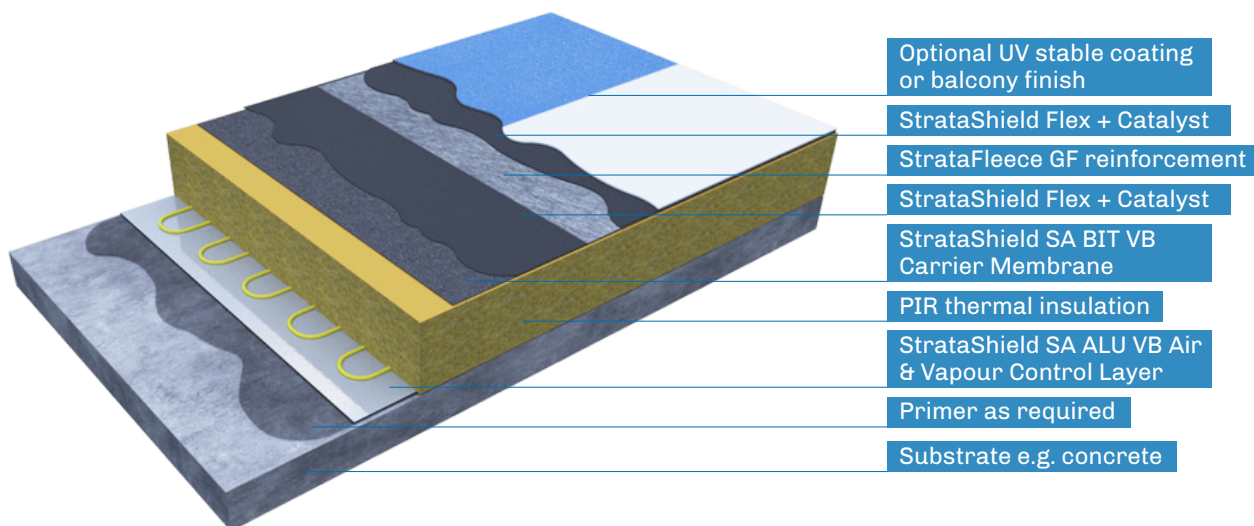
### Features & benefits

- Chemically-cured, wet-on-wet system
- Rapid application, rapid return to service
- Perfectly suited to both new build and refurbishment projects
- Choice of finishes for roofs, balconies and walkways
- BBA Approved with Broof T4 fire performance
- Withstands 6m head of water - ideal for zero falls roofs & blue roof systems



### System build-up

The illustration below shows a typical StrataShield ProFlex warm roof build-up with optional decorative finishes:



### Product & application details

The following table illustrates the approximate coverage rates and curing times for a typical StrataShield ProFlex waterproofing application. For further technical details please consult the individual Product Data Sheets.

Product	Accelerant	Colour	Application Rate	Dry to touch	Fire Performance
StrataShield Flex (25 kg)	StrataShield Catalyst (1.5 kg)	Dark Grey (RAL 7011)	2 kg/m <sup>2</sup> wet-on-wet	3-4 hours	Broof T4

# STRATASHIELD RANGE DETAILS

## A COMPLETE, ONE-STOP SYSTEM SOLUTION

### Range overview

The StrataShield range of polyurethane liquid systems includes high performance waterproofing liquids and a range of key accessories that help to ensure a successful installation. This includes specially formulated primers and bonding agents, reinforcement fabrics and jointing tapes, together with UV stable aliphatic resins to complete the various balcony and walkway systems. The tables below gives details of the core range of StrataShield system products:

### STRATASHIELD WATERPROOFING

Type	Product name	Description / Use	Packaging	Approx. Coverage
2-Layer System	StrataShield Flex	One component liquid polyurethane waterproofing membrane. Available in 2 colours: Light Grey RAL 7001 Dark Grey RAL 7011	6 kg / 25 kg container	1 kg/m <sup>2</sup>
	StrataShield ProFlex	One component liquid polyurethane waterproofing membrane used in conjunction with StrataShield Catalyst	25 kg drum + 1.5 kg drum	2 kg/m <sup>2</sup> (wet-on-wet)
Wet-on-wet system	StrataShield Catalyst	Special additive used to speed up the curing process of StrataShield Flex waterproofing systems		

### STRATASHIELD ACCESSORIES

Type	Product name	Application / Use	Packaging	Approx. Coverage
Primers & Bonding Agents	StrataPrime Poly Rapid	Rapid curing, two-component pure polyurea based primer, specially formulated for flexible substrates	4 kg / 20 kg can	5m <sup>2</sup> per kg
	StrataPrime Porosity Flex	One component polyurethane primer for use on bituminous felt, mastic asphalt, plywood & concrete	4 kg / 20 kg can	5m <sup>2</sup> per kg
	StrataPrime Bonding Agent	One component activator for priming difficult surfaces such as metal, PVC, EPDM & GRP	4 kg / 20 kg can	10m <sup>2</sup> per kg
	StrataPrime HP	Two component epoxy primer for use on damp wood and damp concrete	5 kg / 18 kg can	3m <sup>2</sup> per kg
	StrataPrime GC	Two component epoxy primer for use on newly laid wet / green concrete	15 kg drum	2m <sup>2</sup> per kg
	StrataPrime AC	One component zinc rich anti-corrosion primer	22.7 kg drum	3m <sup>2</sup> per kg
	StrataPrime Standard AC	Cost-effective anti-corrosion primer	5 litre drum	5-8m <sup>2</sup> per kg
AVCLs & Carriers	StrataShield SA ALU VB	Cold-applied, self-adhesive bituminous air and vapour barrier with integrated aluminium foil layer	20m / 40m x 1.1m roll	N/A
	StrataShield SA BIT VB	Cold-applied, self-adhesive bituminous vapour control layer / underlay / carrier membrane	15m x 1.0m roll	N/A
Balconies & Walkways	StrataShield Sealer Coat	Clear (c) or pigmented (p), aliphatic, UV-resistant resin finish (sand / quartz is broadcast into it)	4 kg / 20 kg can (c) 6kg / 25kg can (p)	4m <sup>2</sup> per kg
	StrataShield FC Sealer Coat	Pigmented aliphatic hard wearing finish coating with fast cure properties	5 kg / 15 kg can	3m <sup>2</sup> per kg
	StrataShield Anti-Slip Finish	Course additive to achieve non-slip finish	1 kg bag	Various
Tapes & Fleeces	StrataShield BT Tape	Butyl tex tape for use on upstands or cracks on roof (4 per box)	15.2m x 15cm tape	15.2 linear m
	StrataFleece GF	Glass fibre reinforcing layer which is embed into the base layer of StrataShield resin	25m / 150m x 1m	25m <sup>2</sup> / 150m <sup>2</sup>
	StrataFleece Geo	Themowelded geotextile fabric for use in particularly demanding areas such as box gutters etc.	0.3m / 1m x 100m	30m <sup>2</sup> / 100m <sup>2</sup>



# TECHNICAL SUPPORT & WARRANTIES

## COMPLETE PROJECT REASSURANCE

### Technical service overview

At Strata we aim to provide clients with a complete roofing solution from initial design concept through to completion and ongoing support. In addition to providing a comprehensive suite of datasheets, literature and installation guides, we have a highly skilled technical team of waterproofing experts who are on hand to offer bespoke project support and technical guidance on key items such as:

- System design and specification guidance
- Membrane choice to suit project needs
- Appropriate system accessories
- Project calculations, e.g. U-value and wind-uplift
- On-site surveys and quality assurance checks
- Ongoing maintenance advice

## STRATASHIELD WARRANTY TERMS



**15 YEAR  
MATERIALS  
WARRANTY**

**STRATASHIELD PROFLEX  
SYSTEM**

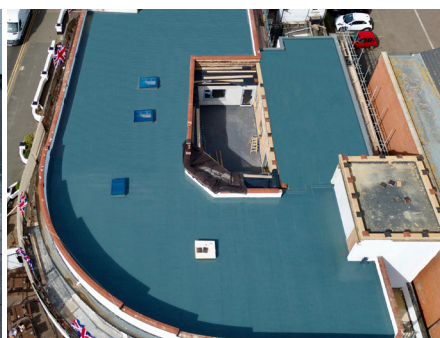


**20 YEAR  
MATERIALS  
WARRANTY**

**STRATASHIELD PROFLEX SYSTEM  
(WITH EXTRA LAYER OF SEALER COAT)**

### StrataShield Warranties

Our warranties offer complete peace of mind that your StrataShield system will continue to provide exceptional waterproofing performance for many years to come. They include all of the components supplied by Strata Waterproofing as part of a single-point guarantee solution (excluding living plants).



### NEED MORE HELP?



**CALL OUR TECHNICAL TEAM ON 028 9030 2924**



**OR REGISTER TO ACCESS OUR DEDICATED TECHNICAL HUB**

**[www.stratawaterproofing.com/technical-hub](http://www.stratawaterproofing.com/technical-hub)**

FOR MORE INFORMATION VISIT:  
[stratawaterproofing.com](http://stratawaterproofing.com)



**Strata Waterproofing Head Office**  
Unit 3, Kilwee Business Park  
Dunmurry, Belfast, BT17 0HD  
(t): 028 9030 2924



**UK Depot**  
Unit A1, Ropemaker Park  
Hailsham, East Sussex, BN27 3GU  
(t): 01323 920208

**General Enquiries**  
(t): 028 9030 2924  
(e): [info@stratawaterproofing.com](mailto:info@stratawaterproofing.com)  
[www.stratawaterproofing.com](http://www.stratawaterproofing.com)